

DuPont Marsh Natural Resource Management Plan

Tara Kauffman, Natural Resources Manager
Brad Phillips, Environmental Projects Coordinator
(December 2012-Updated February 2019)

Erie MetroParks mission is to conserve natural resources while connecting the community with nature through education and exploration.

Features and Resources

DuPont Marsh, a 114 acre State Nature Preserve located in Erie County off of River road on the Huron River, was adopted by the Division of Natural Areas and Preserves in 1980. It is bounded on the north and west by the river and on the south by additional marsh. The property passed from the DuPont Company to the Nature Conservancy in 1977 and to the Ohio Department of Natural Resources in 1980 (*see attachment property map*). Erie MetroParks began managing the property in 1996 following guidelines laid out in the lease agreement and master plan (files found in Erie MetroParks black property cabinet). ODNR retains ownership; Erie MetroParks has a 30 year agreement until January of 2027.

The primary feature of this property is a natural riverine marsh, which connects with the Huron River. Several uncommon sedges have been found here, and a state threatened population of Leafy Blue Flag (*Iris brevicaulis*) persists on or near the site. Plant diversity overall is moderate, with 263 species found (*see attachment plant list thru 2016*). As the marsh depth fluctuates with the level of Lake Erie, some species are only found in low water periods when mud flats are exposed. Bird diversity is very good for the size of the park, with 148 species found to date (*see attachment bird list thru 2016*). Waterfowl and shorebirds can be seen seasonally within the marsh area itself, while the upland woods hosts migrating and breeding passerines. Vertebrates have been incidentally observed, with 13 species found (*see attachment vertebrates thru 2011*). No fish sampling has been done.

Past disturbances at the site include pasturage, apple orchard, a roadway to an old building site, and additional building remnants west of the marsh. Current facilities include a parking lot, picnic tables, and portable toilet. A small loop trail (about a mile) traverses part of the upland woods and leads to an overlook area at the marsh edge. The site also provides access to the Huron River Path.

Management Strategies

DuPont Marsh Natural Resource Management Plan

Tara Kauffman, Natural Resources Manager
Brad Phillips, Environmental Projects Coordinator
(December 2012-Updated February 2019)

The primary management goal, as set out in the ODNR master plan, is to assure the continued preservation and protection of unique flora and fauna of the estuary. Problem species such as Phragmites and purple loosestrife should be controlled and/or eliminated, while the rest of the preserve can be left to continue in natural succession. Potential ecological threats to the property include limed sludge pollution from the nearby Huron Lime Company landfill, water pollution of the Huron River from surrounding areas such as the golf course, campground, etc.

Invasive Species

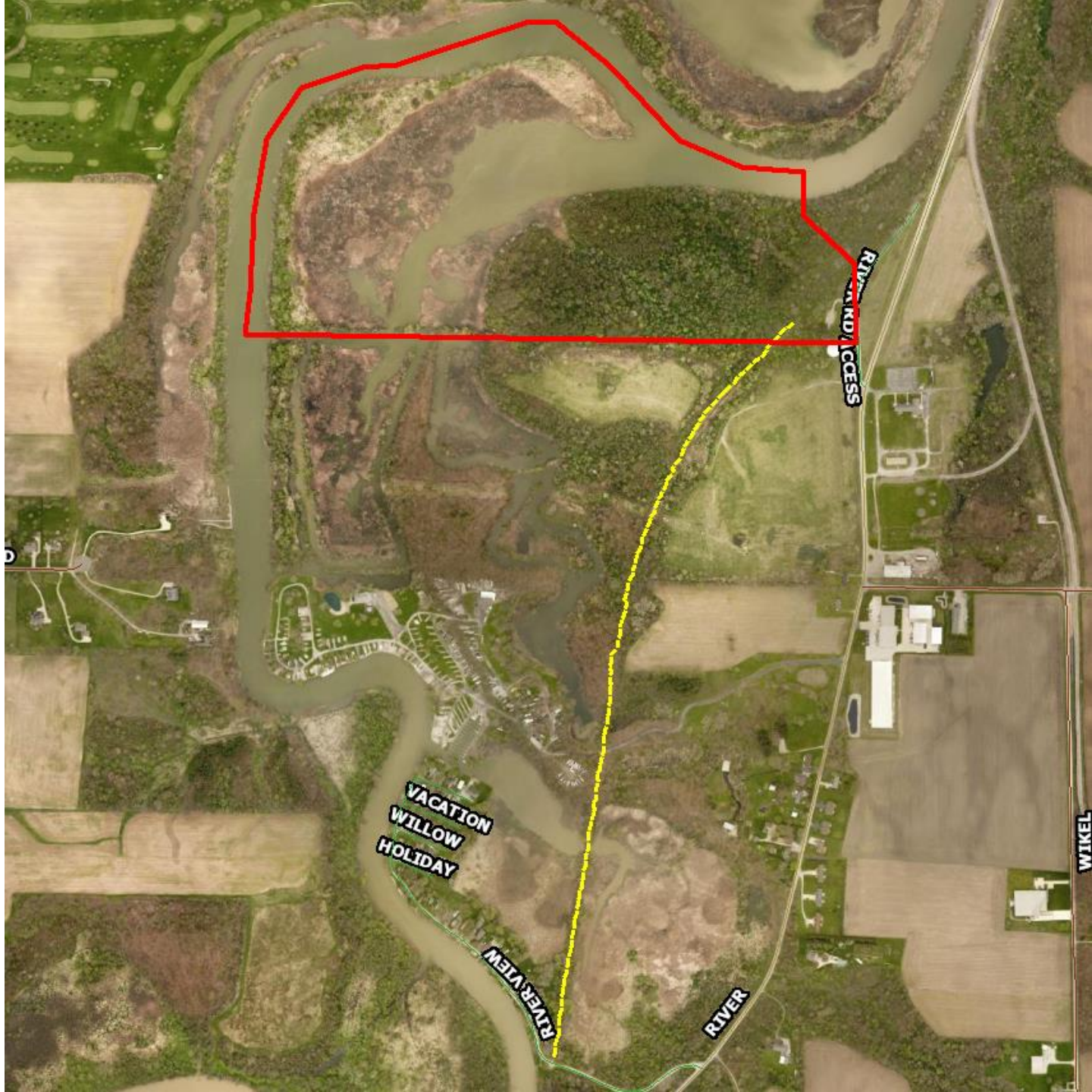
Within the marsh itself, the primary threats are from Narrow-leaf Cattail (*Typha angustifolia*) and Common Reed (*Phragmites australis*). Purple loosestrife has been a pest in the past but is not a major threat at present. Herbicide spraying by helicopter can be effective in reducing these populations. Extensive follow-up is necessary in areas not accessible to aerial coverage.

In the uplands, Amur Honeysuckle (*Lonicera maackii*) and Common Privet (*Ligustrum vulgare*) are abundant and widespread. Multiflora Rose (*Rosa multiflora*) and Japanese Honeysuckle (*Lonicera japonica*) are also common. These have degraded the woods, but do not directly threaten the marsh community nor the *Iris brevicaulis* population. An intensive and extensive control program would be required to restore the upland understory. Lesser Celandine is a recent introduction, being found only along the trail system. Herbicide spraying for this species is best targeted in early spring.

Future Goals and Plans

The master plan allows the construction of an overlook platform at the marsh edge. No other improvements are contemplated at present. Invasive control is an ongoing part of management, and needs to become a higher priority on this property. Herbicide spraying by helicopter has been done in the recent past to control Phragmites within the marsh. These efforts will continue with any grant funding.

**DuPont Marsh State
Nature Preserve
&
Huron River Path**





PLANT List, Dupont Marsh thru 2016

Thursday, March 23, 2017

Code	SciName	Common Name	DPM	Origin	Listed	Invasive
L V						
	Polystichum acrostichoides (Michx) Schott	Fern, Christmas	X	N		
	Onoclea sensibilis L.	Fern, Sensitive	X	N		
	Dryopteris carthusiana (Villars) Fuchs	Fern, Spinulose Wood	X	N		
	Diphasiastrum digitatum (Dill. ex A.Braun) Holub ?	Ground-Pine	X	N		
	Equisetum arvense L.	Horsetail, Field	N L	N		
	Equisetum hyemale L.	Scouring-rush, Tall	C L	N		
	Asplenium platyneuron (L.) BSP	Spleenwort, Ebony	X	N		
			7		0	0
P						
	Agrimonia gryposepala Wallr.	Agrimony, Common	X	N		
	Agrimonia parviflora Aiton	Agrimony, Small-flowered	C L	N		
	Heuchera americana L.	Alum-root, Common	X	N		
	Ammannia robusta Heer&Regel.	Ammannia, Sessile-fruited	X	N		
	Anemone canadensis L.	Anemone, Canada	X	N		
	Peltandra virginica (L.) Schott & Endl.	Arrow-Arum	X	N		
	Sagittaria latifolia Willd.	Arrowhead, Common	X	N		
	Symphotrichum sp, lanceolate	Aster, lanceolate	X	N		
	Aster sp	Aster, large flower	X	N		
	Aster sp	Aster, small	X	N		
	Geum vernum (Raf.) T & G.	Avens, Spring	C W	N		
	Geum canadense Jacq.	Avens, White	X	N		
	Galium aparine L.	Bedstraw, Cleavers	X	N		
	Galium concinnum T. & G.	Bedstraw, Shining	X?	N		
	Galium triflorum Michx.	Bedstraw, Sweet-scented	X	N		
	Bidens frondosa L.	Beggar-ticks, Devils	X	N		
	Monarda fistulosa L.	Bergamot, Wild	X	N		
	Calystegia sepium (L) R.Br.	Bindweed, Hedge	Xf	N		
	Sisyrinchium angustifolium Mill.	Blue-eyed-Grass, Common	X	N		
	Eupatorium perfoliatum L.	Boneset, Common	X	N		
	Bolboschoenus fluviatilis (Torr.) J. Sojak [Scirpus f..]	Bulrush, River	U	N		

Code	SciName	Common Name	DPM	Origin	Listed	Invasive
	<i>Schoenoplectus tabernaemontani</i> (C.C.Gmel.) Palla [<i>Scirpus validus</i>]	Bulrush, Soft-stemmed	C L	N		
	<i>Sparganium eurycarpum</i> Engelm.	Bur-reed, Common	X	N		
	<i>Ranunculus hispidus</i> Michx var <i>nitidus</i>	Buttercup, Swamp	X	N		
	<i>Smilax herbacea</i> L.	Carrion-flower	X	N		
	<i>Daucus carota</i> L.	Carrot, Wild (Queen Anne's Lace)	X	A		
	<i>Nepeta cataria</i> L.	Catnip	X	A		
	<i>Typha latifolia</i> L.	Cat-tail, Common	X	N		
	<i>Typha x glauca</i> Godr.	Cattail, hybrid	X?	A		X
	<i>Typha angustifolia</i> L.	Cat-tail, Narrow-leaved	A M	A		X
	<i>Ranunculus ficaria</i> L.	Celandine, Lesser	U L	A		X
	<i>Cerastium fontanum</i> Baumg.[<i>C.vulgatum</i>]	Chickweed, Common Mouse-eared	X	A		
	<i>Cichorium intybus</i> L.	Chicory	X	A		
	<i>Potentilla simplex</i> Michx.	Cinquefoil, Common	X	N		
	<i>Potentilla norvegica</i> L.	Cinquefoil, Rough	X	N		
	<i>Potentilla recta</i> L.	Cinquefoil, Rough-fruited	X	A		
	<i>Trifolium hybridum</i> L.	Clover, Alsike	X	A		
	<i>Trifolium pratense</i> L.	Clover, Red	X	A		
	<i>Trifolium repens</i> L.	Clover, White	X	A		
	<i>Xanthium strumarium</i> L.	Cocklebur	X	N		
	<i>Tussilago farfara</i> L.	Coltsfoot	R L	A		
	<i>Barbarea vulgaris</i> R.Br.	Cress, Common Winter	X	A		
	<i>Rorippa palustris</i> (L) Besser	Cress, Common Yellow	X	N		
	<i>Cardamine pensylvanica</i> Muhl.	Cress, Pennsylvania Bitter	X	N		
	<i>Ranunculus sceleratus</i> L.	Crowfoot, Cursed	X	N		
	<i>Echinocystis lobata</i> (Michx.) T.& G.	Cucumber, Wild	X	N		
	<i>Taraxacum officinale</i> Weber	Dandelion, Common	U	A		
	<i>Lamium purpureum</i> L.	Dead-nettle, Purple	X	A		
	<i>Penthorum sedoides</i> L.	Ditch-Stonecrop	A W	N		
	<i>Rumex crispus</i> L.	Dock, Curled	X?	A		
	<i>Rumex verticillatus</i> L..	Dock, Swamp	X	N		
	<i>Cuscuta gronovii</i> Willd.	Dodder, Common	X?	N		
	<i>Apocynum cannabinum</i> L.	Dogbane, Indian-Hemp	X	N		
	<i>Lemna minor</i> L.	Duckweed, Lesser	X	N		
	<i>Oenothera biennis</i> L.	Evening-primrose, Common	X	N		

Code	SciName	Common Name	DPM	Origin	Listed	Invasive
	<i>Floerkea proserpinacoides</i> Willd.	False Mermaid	R L	N		
	<i>Lindernia dubia</i> (L.) Pennell.	False Pimpernel	X	N		
	<i>Erigeron annuus</i> (L) Pers.	Fleabane, Daisy (toothy)	X	N		
	<i>Erigeron philadelphicus</i> L.	Fleabane, Philadelphia	X	N		
	<i>Phyla lanceolata</i> (Michx.) Greene	Fog-fruit	X	N		
	<i>Myosotis laxa</i> Lehm.	Forget-me-not, Smaller	X	N		
	<i>Allium vineale</i> L.	Garlic, Field	X	A		
	<i>Tragopogon pratensis</i> L.	Goats-beard, Yellow	X	A		
	<i>Solidago caesia</i> L.	Goldenrod, Blue-stemmed	X?	N		
	<i>Solidago canadensis</i> L.	Goldenrod, Canada (+Tall)	X?	N		
	<i>Solidago juncea</i> Ait.	Goldenrod, Early	X	N		
	<i>Euthamia graminifolia</i> (L.) Nutt.	Goldenrod, Flat-topped	X	N		
	<i>Echinochloa crus-galli</i> (L) Beauv.	Grass, Barnyard	X	N		
	<i>Poa</i> sp.	Grass, Bluegrass, a	X	Z		
	<i>Andropogon virginicus</i> L.	Grass, Common Broom-sedge	X	N		
	<i>Phragmites australis</i> (Cav.) Trin. ex Steudel	Grass, Common Reed	A W	A		X
	<i>Digitaria</i> sp.	Grass, Crabgrass, a	X	A		
	<i>Eragrostis hypnoides</i> (Lam.) BSP	Grass, Creeping Love	X?	N		
	<i>Panicum dichotomiflorum</i> Michx.	Grass, Fall Panic	X	N		
	<i>Setaria faberi</i> Herrm.	Grass, Giant Foxtail	X	A		
	<i>Muhlenbergia</i> sp	Grass, Muhly	X	U		
	<i>Panicum lanuginosum</i> Ell. [P. acuminatum Sw.]	Grass, Old Field Panic	X?	N		
	<i>Phalaris arundinacea</i> L.	Grass, Reed Canary	X	A		X
	<i>Leersia oryzoides</i> (L) Swartz	Grass, Rice Cut	X	N		
	<i>Tridens flavus</i> (L) A.Hitchc.	Grass, Tall Redtop	X	N		
	<i>Phleum pratense</i> L.	Grass, Timothy	X	A		
	<i>Elymus virginicus</i> L.	Grass, Virginia Wild Rye	X	N		
	<i>Echinochloa walteri</i> (Pursh) Heller	Grass, Walters Barnyard	X	N		
	<i>Leersia virginica</i> Willd.	Grass, White	x	N		
	<i>Glechoma hederacea</i> L.	Ground Ivy	X	A		
	<i>Apios americana</i> Medicus	Groundnut, Common	X	N		
	<i>Hieracium floribundum</i> Wimm.& Grab.	Hawkweed, Glaucous	Xf	A		
	<i>Hieracium auranticum</i> L.	Hawkweed, Orange	X	A		
	<i>Geranium robertianum</i> L.	Herb Robert	X	N		

Code	SciName	Common Name	DPM	Origin	Listed	Invasive
	<i>Humulus lupulus</i> L.	Hops, Common	X	N		
	<i>Solanum carolinense</i> L.	Horse-nettle	X	Z		
	<i>Conzya canadensis</i> (L.) Cronq.	Horseweed, Common	X	Z		
	<i>Iris virginica</i> L. or <i>versicolor</i>	Iris, Larger Blue Flag	X	N		
	<i>Iris brevicaulis</i> Raf.	Iris, Leafy	R L	N	T	
	<i>Vernonia gigantea</i> (Walt)Trel ex Branner & Coville	Ironweed, Tall	X	N		
	<i>Arisaema triphyllum</i> (L.) Schott	Jack-in-the-pulpit	X	N		
	<i>Impatiens capensis</i> Meerb.	Jewelweed, Orange (Touch-me-not)	X?	N		
	<i>Datura stramonium</i> L.	Jimson-weed	X	A		
	<i>Eutrochium purpureum</i> (L.) E.E. Lamont [Eupatorium p.. L.]	Joe-Pye-Weed, Purple (Sweet)	X?	N		
	<i>Eutrochium maculatum</i> (L.) E.E. Lamont [Eupatorium m..L.]	Joe-pye-weed, Spotted	X	N		
	<i>Hieracium caespitosum</i> Dumort	King Devil, Yellow	X?	A		
	<i>Polygonum virginianum</i> L.	Knotweed, Virginia	X	N		
	<i>Chenopodium album</i> L.	Lambsquarters	X	A		
	<i>Lythrum salicaria</i> L.	Loosestrife, Purple	X	A		X
	<i>Nelumbo lutea</i> Willd.	Lotus, American	X	N		
	<i>Podophyllum peltatum</i> L.	Mayapple	X	N		
	<i>Medicago lupulina</i> L.	Medick, Black	X	A		
	<i>Asclepias incarnata</i> L.	Milkweed, Swamp	X	N		
	<i>Mentha arvensis</i> L.	Mint, Field	X	N		
	<i>Lysimachia nummularia</i> L.	Moneywort	X	A		
	<i>Mimulus ringens</i> L.	Monkey-flower, Common	C L	N		
	<i>Mimulus alatus</i> Ait.	Monkey-flower, Sharp-winged	X R	N		
	<i>Verbascum thapsus</i> L.	Mullein, Common	X	A		
	<i>Verbascum blatteria</i> L.	Mullein, Moth	X	A		
	<i>Alliaria petiolata</i> (M.Bieb) Cavara & Grande	Mustard, Garlic	X	A		X
	<i>Boehmeria cylindrica</i> (L.) Sw.	Nettle, False	X	N		
	<i>Urtica dioica</i> L.	Nettle, Stinging	X	N		
	<i>Solanum dulcamara</i> L.	Nightshade, Bittersweet	X	A		
	<i>Solanum nigrum</i> L. [S. <i>ptychanthum</i>]	Nightshade, Black	X	N		
	<i>Circaea lutetiana</i> L.	Nightshade, Common Enchanter's	X	N		
	<i>Cyperus</i> sp.	Nut-sedge, a common one	X	N		

Code	SciName	Common Name	DPM	Origin	Listed	Invasive
	<i>Heliopsis helianthoides</i> (L.) Sweet	Ox-eye, Smooth	X	N		
	<i>Pontederia cordata</i> L.	Pickerelweed	X	N		
	<i>Amaranthus</i> sp.	Pigweed, a	X	A		
	<i>Erechtites hieracifolius</i> (L.) Raf. ex DC.	Pilewort	X	N		
	<i>Matricaria discoidea</i> DC	Pineapple-weed	X	A		
	<i>Plantago lanceolata</i> L.	Plantain, English	X	A		
	<i>Plantago rugelii</i> Decne.	Plantain, Rugel's(Pale)	X	N		
	<i>Phytolacca americana</i> L.	Pokeweed	X	N		
	<i>Potamogeton</i> sp	Pondweed, linear	X	N		
	<i>Packera aurea</i> (L.) [Senecio aureus L.]	Ragwort, Golden	X	N		
	<i>Hibiscus moscheutos</i> L.	Rose-mallow, Swamp	X	N		
	<i>Juncus</i> sp.	Rush	X	N		
	<i>Juncus effusus</i> L.	Rush, Soft	X	N		
	<i>Carex blanda</i> Dewey	Sedge, Common Wood	X?	N		
	<i>Carex cristatella</i> Britton	Sedge, Crested	X dnr	N		
	<i>Carex emoryi</i> Dewey	Sedge, Emory's	X dnr	N		
	<i>Carex stipata</i> Muhl.ex Willd.	Sedge, Fox	X	N		
	<i>Carex vulpinoidea</i> Michx.	Sedge, Foxtail	X	N		
	<i>Carex frankii</i> Kunth.	Sedge, Frank's	U L	N		
	<i>Carex trichocarpa</i> Muhl. ex Willd.	Sedge, Hairy-fruited	X dnr	N		
	<i>Carex normalis</i> Mackenzie	Sedge, Larger Straw	x	N		
	<i>Carex aquatilis</i> Wahlenb.	Sedge, Leafy Tussock	x dnr	N	P	
	<i>Carex cephalophora</i> Muhl.	Sedge, Oval-headed	X	N		
	<i>Carex radiata</i> (Wahlenb.)Small	Sedge, Radiate	x	N		
	<i>Carex swanii</i> (Fernald) MacKenzie	Sedge, Swan's	X	N		
	<i>Carex laxiflora</i> Lam.	Sedge, Two-edged	X	N		
	<i>Prunella vulgaris</i> L.	Self-heal(Heal-all)	X	A		
	<i>Scutellaria lateriflora</i> L.	Skullcap, Mad-dog	X	N		
	<i>Symplocarpus foetidus</i> (L) Salisb. ex Barton	Skunk-cabbage	X	N		
	<i>Polygonum lapathifolium</i> L.	Smartweed, Nodding	X	N		
	<i>Polygonum amphibium</i> L.	Smartweed, Water	Xf	N		
	<i>Ageratina altissima</i> (L.) R.M.King & H.Rob. [Eupatorium rugosum Houtt.]	Snakeroot, White	X	N		
	<i>Smilacina racemosa</i> (L.) Desf.	Solomon's-plume,	X	N		
	<i>Sonchus asper</i> (L.) Hill	Sow-thistle, Spiny-leaved	X	A		

Code	SciName	Common Name	DPM	Origin	Listed	Invasive
	Nuphar advena (Ait.) Aiton f.	Spatter-dock	X	N		
	Veronica officinalis L.	Speedwell, Common	X	A		
	Veronica arvensis L.	Speedwell, Corn	X	A		
	Veronica catenata Pennell.	Speedwell, Sweet-Water	X	N		
	Veronica serpyllifolia L.	Speedwell, Thyme-leaved	X	A		
	Eleocharis obtusa (Willd.) Schultes	Spike-rush, Blunt	X?	N		
	Claytonia virginica L.	Spring-beauty	R L	N		
	Hypericum perforatum L.	St.-John's-wort, Common	X	A		
	Sedum ternatum Michx.	Stonecrop, Wild	R L	N		
	Fragaria virginiana Duchesne	Strawberry, Virginia	X	N		
	Helianthus decapetalus L.	Sunflower, Thin-leaved	X?	N		
	Melilotus albus Medik.	Sweet-Clover, White	X	A		
	Melilotus officinalis (L)Lam.	Sweet-Clover, Yellow	X	A		
	Dipsacus fullonum L.	Teasel, Common	X	A		X
	Cirsium vulgare (Savi) Tenore	Thistle, Bull	X?	A		
	Cirsium arvense (L) Scop.	Thistle, Canada	X	A		X
	Bidens cernua L.	Tickseed-Sunflower, Nodding	X	N		
	Desmodium sp	Tick-trefoil, a	X	N		
	Triosteum perfoliatum L.	Tinker's-weed	X	N		
	Cardamine concatenata (Michx.) Sw.[Dentaria laciniata]	Toothwort, Cut-leaved	U L	N		
	Cyperus bipartitus Torr. [C. rivularis]	Umbrella-sedge, Shining	X	N		
	Abutilon theophrasti Medik.	Velvet-leaf	X	A		
	Triodanis perfoliata (L.) Nieuwl.	Venus'-looking-glass	U L	N		
	Verbena hastata L.	Vervain, Blue	X	N		
	Viola sororia Willd.	Violet, Common Blue	X	N		
	Viola pubescens Ait.	Violet, Common Yellow	X?	N		
	Clematis virginiana L.	Virgin's-bower	X	N		
	Cicuta maculata L.	Water-Hemlock	X	N		
	Lycopus americanus Muhl.	Water-horehound, Cut-leaved	X?	N		
	Nymphaea odorata Aiton	Water-lily	X	N		
	Sium suave Walt.	Water-parsnip	X?	N		
	Polygonum hydropiper L.	Water-pepper	X	N		
	Alisma subcordatum Raf.	Water-plantain, Southern	X?	N		
	Ludwigia palustris (L.) Ell.	Water-purslane	X	N		

Code	SciName	Common Name	DPM	Origin	Listed	Invasive
	<i>Erophila verna</i> (L.) Besser [Draba ...]	Whitlow-grass, Vernal	C L	A		
	<i>Epilobium hirsutum</i> L.	Willow-herb, Hairy	X	A		X
	<i>Epilobium coloratum</i> Biehler	Willow-herb, Purple-leaved	X?	N		
	<i>Verbesina alternifolia</i> (L)Britt.	Wingstem	X	N		
	<i>Luzula echinata</i> (Small)F.J.Herm.	Wood-rush	x	N		
	<i>Oxalis stricta</i> L.	Wood-sorrel, Common yellow	X?	N		
	<i>Scirpus cyperinus</i> (L.) Kunth	Wool-grass	Xf	N		
	<i>Achillea millefolium</i> L.	Yarrow	X	A		
	<i>Eclipta prostrata</i> (L.) L.	Yerba-de-tajo	X	N		
			198		2	10

T

	<i>Malus pumila</i> Mill. [<i>Pyrus malus</i>]	Apple, Common	X	A		
	<i>Fraxinus pennsylvanica</i> Marshall	Ash, Red and Green	X	N		
	<i>Fraxinus americana</i> L.	Ash, White	X	N		
	<i>Populus tremuloides</i> Michaux	Aspen, Quaking	X?	N		
	<i>Elaeagnus umbellata</i> Thunb.	Autumn-olive	X	A		X
	<i>Celastrus scandens</i> L.	Bittersweet, American	X	N		
	<i>Rubus occidentalis</i> L.	Bramble, Black Raspberry	X	N		
	<i>Rubus allegheniensis</i> Porter.	Bramble, Common Blackberry	X	N		
	<i>Rubus flagellaris</i> Willd.	Bramble, Northern Dewberry	X?	N		
	<i>Aesculus glabra</i> Willd.	Buckeye, Ohio	X	N		
	<i>Rhamnus frangula</i> L.	Buckthorn, Glossy	R	A		X
	<i>Cephalanthus occidentalis</i> L.	Buttonbush	X	N		
	<i>Prunus pensylvanica</i> L.f.	Cherry, Pin	X	N		
	<i>Prunus avium</i> L.	Cherry, Sweet	X	A		
	<i>Prunus serotina</i> Ehrh.	Cherry, Wild Black	C	N		
	<i>Prunus virginiana</i> L.	Choke Cherry	X	N		
	<i>Populus deltoides</i> Marsh	Cottonwood	X	N		
	<i>Parthenocissus vitacea</i> (Knerr.) A.Hitch.[P.inserta]	Creeper, Thicket	X	N		
	<i>Parthenocissus quinquefolia</i> (L) Planch.	Creeper, Virginia	X	N		
	<i>Ribes americanum</i> Mill.	Currant, American Black	X	N		
	<i>Cornus florida</i> L.	Dogwood, Flowering	R L	N		
	<i>Cornus racemosa</i> Lam.	Dogwood, Gray (Panicled)	X	N		
	<i>Cornus serica</i> L. [stolonifera]	Dogwood, Red-Osier	X	N		

Code	SciName	Common Name	DPM	Origin	Listed	Invasive
	<i>Cornus drummondii</i> C.A.Meyer	Dogwood, Rough-leaved	X	N		
	<i>Sambucus canadensis</i> L.	Elderberry or Common Elder	X	N		
	<i>Ulmus pumila</i> L.	Elm, Siberian	X?	A		X
	<i>Ulmus americana</i> L.	Elm, White (American)	X	N		
	<i>Vitis riparia</i> Michx.	Grape, Riverbank	X	N		
	<i>Vitis aestivalis</i> Michx.	Grape, Summer	X	N		
	<i>Smilax hispida</i> Muhl.	Greenbrier, Bristly	X	N		
	<i>Celtis occidentalis</i> L.	Hackberry	X	N		
	<i>Crataegus</i> sp.	Hawthorn, a	X	N		
	<i>Gleditsia triacanthos</i> L.	Honey-locust	U	N		
	<i>Lonicera maackii</i> (Rupr.) Maxim.	Honeysuckle, Amur	X	A		X
	<i>Lonicera japonica</i> Thunb.	Honeysuckle, Japanese	X	A		X
	<i>Lonicera morrowii</i> A.Gray	Honeysuckle, Morrow	X	A		X
	<i>Lonicera tatarica</i> L.	Honeysuckle, Tartarian	X	A		X
	<i>Toxicodendron radicans</i> (L) Ktze.	Ivy, Poison	X	N		
	<i>Acer negundo</i> L.	Maple, Ash-leaved(Box-elder)	X	N		
	<i>Acer saccharinum</i> L.	Maple, Silver	X	N		
	<i>Acer saccharum</i> Marsh	Maple, Sugar	R	N		
	<i>Quercus palustris</i> Muenchh.	Oak, Pin	X	N		
	<i>Quercus rubra</i> L.	Oak, Red	X	N		
	<i>Quercus imbricaria</i> Michx.	Oak, Shingle	X	N		
	<i>Quercus alba</i> L.	Oak, White	R	N		
	<i>Maclura pomifera</i> (Raf.) Schneider	Osage-orange	R	Z		
	<i>Pinus strobus</i> L.	Pine, White	pl	Z		
	<i>Ligustrum vulgare</i> L.	Privet, Common	C W	A		X
	<i>Cercis canadensis</i> L.	Redbud	pl?	N		
	<i>Rosa multiflora</i> Thunb.	Rose, Multiflora	X	A		X
	<i>Sassafras albidum</i> (Nutt.) Nees	Sassafras	X	N		
	<i>Rhus glabra</i> L.	Sumac, Smooth	X	N		
	<i>Liriodendron tulipifera</i> L.	Tulip-poplar	X	N		
	<i>Viburnum recognitum</i> Fern.	Viburnum, Arrow-wood	X?	N		
	<i>Viburnum opulus</i> L.	Viburnum, Euro. Cranberry	X	A		
	<i>Euonymus alatus</i> (Thunb.) Sieb.	Wahoo, Winged (burning bush)	X	A		X
	<i>Juglans nigra</i> L.	Walnut, Black	R L	N		
	<i>Salix nigra</i> Marsh	Willow, Black	X	N		

Code	SciName	Common Name	DPM	Origin	Listed	Invasive
			58		0	10
		263	263		2	20

Legend for Plant List

Code	Listed	Origin	Abundance/Distribution	Description of Code
L V				Lower Vascular Plant
P				Herbaceous
T				Woody Plant
	E			Endangered on State List
	P			Potentially Threatened on State List
	T			Threatened on State List
		A		Alien to Area and Country
		N		Native to Area, Indigenous
		Z		Naturalized from other part of country
			** bl	found by J. Blakeman
			** dnr	found by ODNR personnel
			** et	found by Envirotech Consultants
			** JB	found by J. Bissell
			** jm	found by John Mack
			** LT	found by L. Terveen
			A L	Abundant & Local
			A M	Abundant & Moderately Distributed
			A W	Abundant & Widespread
			ark	planted by J. Blakeman in 'ark' prairie
			C L	Common & Local
			C M	Common & Moderately Distributed
			C W	Common & Widespread
			N	Unknown Abundance or Distribution
			o	old record, not found recently
			pl	planted, usually leftover landscaping
			R L	Rare & Local
			R M	Rare and Moderately Distributed
			R W	Rare and Widespread
			re	restoration planting species
			U L	Uncommon & Local
			U M	Uncommon & Moderately Distributed
			U W	Uncommon & Widespread
			X	Present



Vertebrate List for Dupont Marsh thru 2011

Thursday, December 06, 2012

Common Name	DPM	Group
Frog, Leopard	X	A
Toad, American	X	A
Carp, Common	X	F
Chipmunk, Eastern	X	M
Coyote	X	M
Deer, White-tail	X	M
Mole sp	X	M
Muskrat	X	M
Raccoon	X	M
Shrew, Short-tail	X	M
Squirrel, Fox	X	M
Woodchuck	X	M
Snake, Garter	X	R

13



Birds of DuPont Marsh thru 2016

Tuesday, February 07, 2017

Species	DPM
Canada Goose	Summer Resident
Tundra Swan	Migrant
Wood Duck	Summer Resident
Gadwall	Spring Migrant
American Wigeon	Spring Migrant
Black Duck	Spring Migrant
Mallard Duck	Resident
Blue Wing Teal	Spring Migrant
Shoveler Duck	Spring Migrant
Northern Pintail	Spring Migrant
Green-winged Teal	Spring Migrant
Lesser Scaup	Spring Migrant
Common Goldeneye	Migrant
Hooded Merganser	Migrant
Common Merganser	Migrant
Red Breasted Merganser	Migrant
Wild Turkey	Resident?
Pied-billed Grebe	Spring Migrant
Double-crested Cormorant	Summer Visitor
Great Blue Heron	Regular Visitor
Great Egret	Summer Visitor
Turkey Vulture	Resident
Bald Eagle	Regular visitor
Sharp-shinned Hawk	Migrant
Cooper's Hawk	Resident
Broad-winged Hawk	Spring Migrant
Red-tailed Hawk	Resident
Merlin	Rare visitor
Peregrine Falcon	Rare visitor
American Coot	Spring Migrant
Sandhill Crane	Rare visitor
Semipalmated Plover	Spring Migrant
Killdeer	Resident

Species	DPM
Greater Yellowlegs	Spring Migrant
Lesser Yellowlegs	Spring Migrant
Solitary Sandpiper	Spring Migrant
Spotted Sandpiper	Summer Resident?
Least Sandpiper	Spring Migrant
Pectoral Sandpiper	Spring Migrant
Dunlin	Spring Migrant
Long-billed Dowitcher	Spring Migrant
American Woodcock	Summer Resident
Bonaparte's Gull	Migrant
Ring-billed Gull	Regular visitor
Herring Gull	Regular visitor
Common Tern	Migrant
Forster's Tern	Migrant
Rock Pigeon	Resident
Mourning Dove	Resident
Yellow-billed Cuckoo	Summer resident
Screech Owl	Resident
Great Horned Owl	Resident
Chimney Swift	Summer Resident
Ruby-throated Hummingbird	Summer Resident
Belted Kingfisher	Resident
Red-bellied Woodpecker	Resident
Yellow-bellied Sapsucker	Spring Migrant
Downy Woodpecker	Resident
Hairy Woodpecker	Resident
Yellow-shafted Flicker	Resident
Pileated Woodpecker	Resident
Eastern Wood Pewee	Summer Resident
Yellow-bellied Flycatcher	Spring Migrant
Acadian Flycatcher	Summer Resident
Willow Flycatcher	Summer Resident
Least Flycatcher	Spring Migrant
Eastern Phoebe	Summer Resident
Great Crested Flycatcher	Summer Resident

Species	DPM
Eastern Kingbird	Summer Resident
White-eyed Vireo	Spring Migrant
Yellow Throated Vireo	Spring Migrant
Blue-headed Vireo	Spring Migrant
Warbling Vireo	Summer Resident
Red-eyed Vireo	Summer Resident
Blue Jay	Resident
American Crow	Resident
Horned Lark	Flyover
Purple Martin	Summer Visitor
Tree Swallow	Summer Resident
Rough-winged Swallow	Summer Resident
Bank Swallow	Summer Resident
Cliff Swallow	Summer Resident
Barn Swallow	Summer Resident
Black-capped Chickadee	Resident
Tufted Titmouse	Resident
Red-breasted Nuthatch	Winter Visitor
White-breasted Nuthatch	Resident
Brown Creeper	Winter Visitor
Carolina Wren	Resident
House Wren	Summer Resident
Marsh Wren	Summer Resident
Golden-crowned Kinglet	Winter Visitor
Ruby Crowned Kinglet	Migrant
Blue-gray Gnatcatcher	Summer Resident
Eastern Bluebird	Resident
Veery	Summer Resident
Swainson's Thrush	Spring Migrant
Hermit Thrush	Spring Migrant
Wood Thrush	Summer Resident
American Robin	Resident
Gray Catbird	Summer Resident
Brown Thrasher	Summer Resident
Starling	Resident

Species	DPM
American Pipit	Spring Migrant
Cedar waxwing	Summer Resident
Blue-winged Warbler	Summer Resident
Tennessee Warbler	Spring Migrant
Nashville Warbler	Spring Migrant
Parula Warbler	Spring Migrant
Yellow Warbler	Summer Resident
Chestnut-sided Warbler	Spring Migrant
Magnolia Warbler	Spring Migrant
Black-throated Blue Warbler	Spring Migrant
Yellow-rumped Warbler	Migrant
Black-throated Green Warbler	Spring Migrant
Palm Warbler	Spring Migrant
Bay-breasted Warbler	Spring Migrant
Cerulean Warbler	Spring Migrant
American Redstart	Summer Resident
Ovenbird	Spring Migrant
Northern Waterthrush	Spring Migrant
Common Yellowthroat	Summer Resident
Hooded Warbler	Summer Resident
Wilson's Warbler	Spring Migrant
Canada Warbler	Spring Migrant
Scarlet Tanager	Summer Resident
Northern Cardinal	Resident
Rose-breasted Grosbeak	Summer Resident
Indigo Bunting	Summer Resident
Rufous Sided Towhee	Summer Resident
Tree Sparrow	Winter Visitor
Chipping Sparrow	Summer Resident
Field Sparrow	Summer Resident
Fox Sparrow	Spring Migrant
Song Sparrow	Resident
Swamp Sparrow	Resident
White-throated Sparrow	Winter Visitor
White-crowned Sparrow	Spring Migrant

Species	DPM
Dark-eyed Junco	Winter Visitor
Red-winged blackbird	Summer Resident
Eastern Meadowlark	Summer Resident
Rusty Blackbird	Migrant
Common Grackle	Summer Resident
Brown-headed Cowbird	Summer Resident
Orchard Oriole	Summer Resident
Baltimore Oriole	Summer Resident
House Finch	Resident
American Goldfinch	Resident